



LEASEHOLD

Retirement Property

39 WOODMERE COURT, 7 AVENUE ROAD, LONDON, N14 4BW

Asking Price

£200,000

FEATURES

- Popular Retirement Development
- Lift Service
- Separate Kitchen
- Resident Management Staff
- Minimum Age 60 Years
- 2 Bedrooms
- Private Garage & Residents Car Park
- Beautiful Communal Grounds and Gardens

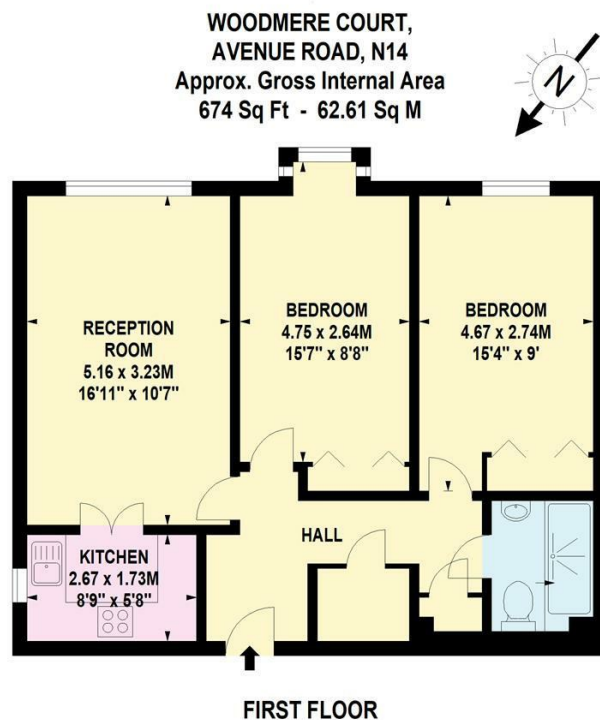


RASH & RASH

2 Bedroom Retirement Property located in London

We are pleased to offer for sale this well maintained chain free, 2 bedroom 1st floor retirement apartment in a popular development and close to transport link and amenities. The property benefits from two bedrooms with fitted wardrobes, a bathroom, spacious lounge and a modern fitted kitchen. In addition it comes with a private garage, communal lounge area and gardens, residents' parking, lift, multiple 24 hour emergency cords and resident staff.

Woodmere Court is a short walk to Southgate High Street and Tube Station but also has a bus stop outside the development. We highly recommend viewing.



Call us on

02088822828

info@rashandrash.com

<https://www.rashandrash.com/>

Council Tax Band

E

Energy Efficiency Rating		
	Current	Potential
Very energy efficient - lower running costs		
(92 plus) A		
(81-91) B		
(69-80) C		
(55-68) D		
(39-54) E	67	72
(21-38) F		
(1-20) G		
Not energy efficient - higher running costs		
England & Wales	EU Directive 2002/91/EC	

Agents Note: Whilst every care has been taken to prepare these particulars, they are for guidance purposes only. All measurements are approximate and are for general guidance purposes only and whilst every care has been taken to ensure their accuracy, they should not be relied upon and potential buyers are advised to recheck the measurements.

RASH & RASH